

## SHELIX SPEC. SHEET

Please read the following before filling out the spec sheet, it will aid in faster processing of the order.

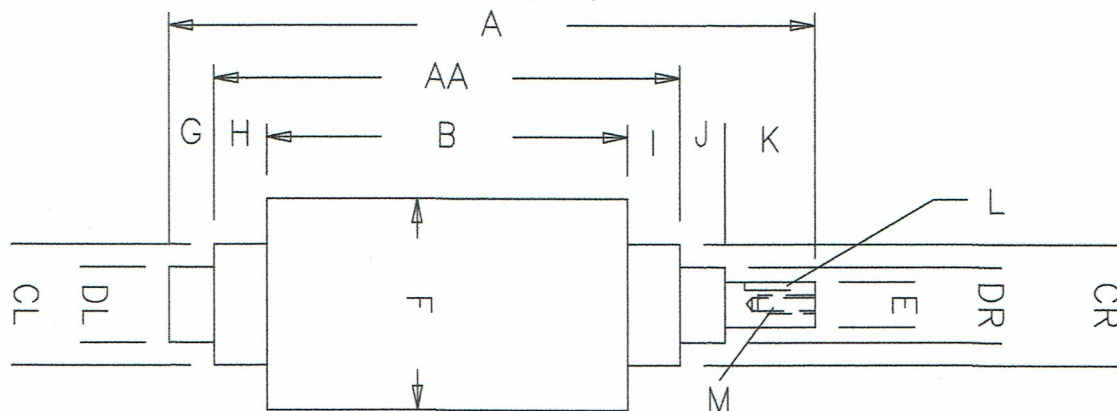
**WE DO NOT MAKE SHELIX HEADS FOR JOINTERS AND COMBINATION MACHINES THAT HAVE NO OUT-FEED TABLE ADJUSTMENT. PLEASE BE AWARE THAT IT IS YOUR RESPONSIBILITY TO CHECK ALL CRITICAL ITEMS.....CREDIT WILL NOT BE GIVEN ON CUSTOM ORDERS WHERE INCORRECT INFORMATION WAS FURNISHED**

1. Make sure the individual numbers add up to the over all length, the bearing-bearing numbers ( inside dimensions are very important ) .....let us know if any dimensions are not critical.
2. Due to so many different OEM thread combinations, we try to use standard RH type threads whenever possible. Some left hand nuts and bolts are not available; if changed, we will furnish the nuts or bolts. This will not compromise the operation of the head.  
A small amount of Loctite can be used if needed.  
In the case where it does matter (pulley screws on, mortise attachment, etc) please let us know.
3. We always need the cutting diameter and rotation. ... the only time the steel dia. would be critical is if the head must be installed w/o the knives through a certain dia. opening.  
If you are sending us a sample to get the spec. please leave at least one knife in the head at the correct height.
4. Due to our knife placement being on an angle, the knives overhang the steel on each side. We normally step the steel in .100" per side on planers and only on the pulley side for jointers due to close clearance issues on so many machines. If your machine has ample clearance of at least 3/16" (5mm) between the side of the head and any part of the casting, this will not be necessary; please indicate as such.
5. Let us know if the machine is direct drive or uses any type of tapered shaft, as some parts may be required for mfg.
6. Some jointer heads are two piece, if it can be made and installed as a one piece unit, let us know otherwise we will need the sample head and shaft for mfg.

Thanks  
Byrd Tool Corp.  
rev. 1-17-17

BYRD TOOL CORP.  
502 JOHNSON STREET  
LEITCHFIELD, KY. 42754

PHONE: (270) 230-0079 FAX: (270) 230-0029 mail@byrdtool.com



**WE DO NOT MAKE SHELIX HEADS FOR JOINTERS AND COMBINATION MACHINES THAT HAVE NO OUT-FEED TABLE ADJUSTMENT, PLEASE BE AWARE IT IS YOUR RESPONSIBILITY TO CHECK ALL CRITICAL ITEMS.....CREDIT WILL NOT BE GIVEN ON CUSTOM ORDERS WHERE INCORRECT INFORMATION WAS FURNISHED**

\* These items are for a basic quote only \*

For a final order, if needed modify or provide a more detailed drawing or send the sample

\* A(overall length)\_\_\_\_\_

H=\_\_\_\_\_

AA(length between bearings)\_\_\_\_\_

I=\_\_\_\_\_

\* B(cutting edge length)\_\_\_\_\_

J=\_\_\_\_\_

CL=\_\_\_\_\_

K=\_\_\_\_\_

CR=\_\_\_\_\_

L (Key Ways)\_\_\_\_\_

DL=\_\_\_\_\_

M (internal threads)\_\_\_\_\_

DR=\_\_\_\_\_

N External threads\_\_\_\_\_

E=\_\_\_\_\_

(Thread pitch & rotation)

\* F(cutting dia.)=\_\_\_\_\_

G=\_\_\_\_\_

\* # Knives/ Wings \_\_\_\_\_

Rotation\_\_\_\_\_

\* Feed Rate\_\_\_\_\_

Company Name\_\_\_\_\_

Contact\_\_\_\_\_

Fax / Phone / email\_\_\_\_\_

Approval\_\_\_\_\_

Machine Mfg.\_\_\_\_\_

Model #\_\_\_\_\_ Sn. #\_\_\_\_\_

JOINTER ☐

PLANER ☐

COMBO ☐